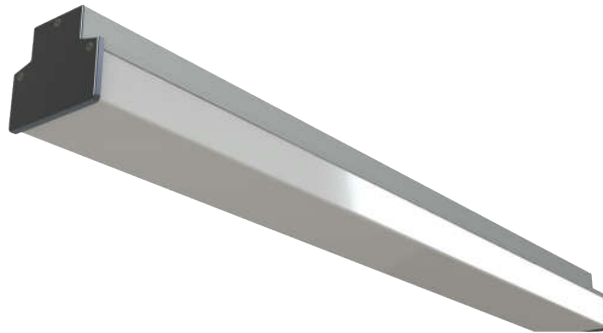


# INTELLISUN HUMAN CENTRIC LIGHTING

The IntelliSUN Batten is a full spectrum light source delivering computer controlled daylight simulation at high efficiency and reliability. The light source is capable of being dimmed from 0 to 100% with colour temperature smoothly transitioning from 2500K to 6000K, all the while maintaining colour rendering better than 95 CRI.

Integrated intelligence supports autonomous wireless interaction with other fixtures and environmental sensors, providing a secure network independent of local WiFi.



**IntelliSUN 1200 Box Batten**

## Light Source:

Light Source:	306 colour Luxeon LEDs
Fixture Output:	0 - 4,800lm (Programmable <sup>2</sup> )
Fixture Efficacy:	100 - 120 lm/W <sup>1</sup>
Fixture Power:	4 - 40W (Programmable <sup>2</sup> )
Operating Life:	> 60,000 hrs L90 Projected L70 > 250k hrs
Colour Temp:	White 2500 - 6000K nom.
Colour Rendering:	CRI > 95 2500K-6000K R9 > 90 TM-30: Rf 90, Rg 100
Cyanosis Index:	0.98 @ 4000K
Flicker:	Nil
Output:	No UV or IR
Dimming:	0-100%

## Power Supply:

Input Voltage:	24V DC
Input Power:	<40W <sup>2</sup> (<1.7A @ 24V)
Power Supply:	85-305VAC to 24V 40W
MTBF	439,000 hrs @ 25°C

## Environmental:

Ambient Temp:	-20°C to 50°C
Operating Temp:	40°C at 25°C ambient

<sup>1</sup> Depending upon colour temperature & dim level

<sup>2</sup> Programmable to suit application

## Features:

Full spectrum throughout tuneable colour temperature range of 2500K - 6000K.  
Fantastic Colour Rendering >95CRI.  
Excellent Cyanosis Index (COI) < 1.0  
Full range dimming 0-100%.  
Zero Flicker.

## Control:

Integrated autonomous wireless control allows full interaction with other fixtures to optimise energy savings and task specific lighting. No additional control system is required.

## Optional :

PIR or Microwave Sensor  
Interaction with Environmental Sensors  
Germicidal Light Spectrum for bacteria sterilisation.

## Applications:

Healthcare, Aged Care, Schools, Quality Commercial Office, Manufacturing .

## Installation:

Direct to ceiling or wall, or suspended.

## Mechanical:

All aluminium.  
PPMA or Prismatic Acrylic Diffuser options  
Length / Width / H : 1195 x 127 x 106mm  
Weight: Approx 2.9kg

**Highly Efficient:** 4,500 lumens from 37W for 120lm/W fixture efficacy.

**Extremely Long Operating Life:** > 60,000 hrs at 90% lumen maintenance with power supply MTBF of 439,000 hrs at 25°C.

**Plug and Play:** Self contained, self configuring network. No supporting cabling or infrastructure required. Provides data transport for additional sensors.

**Occupancy Sensing:** PIR or Integrated microwave sensor option allows adaptive lighting strategies and occupancy monitoring.

**Environmental Monitoring:** Optional integration with Environmental Sensors allows mapping of internal environmental quality and provides mechanisms for additional energy savings through interaction with HVAC systems.

**Daylight Harvesting:** System wide detection of ambient light conditions reduces amount of "fill in" lighting required.

**Task Tuning:** Individual (or groups) of luminaires can maintain different target light levels (and colours) to suit tasks being performed in their areas.

**Zone Control:** Luminaires can be grouped into zones for grouped control strategies (for example, corridor vs office spaces)

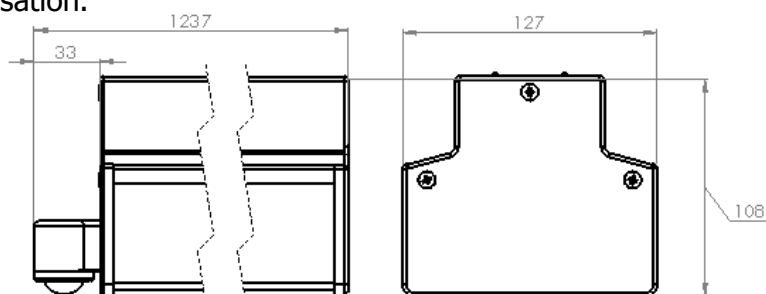
**Addressable:** Luminaires are uniquely addressable for unique control strategies (or sensor monitoring) independent of electrical wiring.

**Continuous Dimming:** Light level from 0-100% in 200+ steps for smooth lighting transitions. Ramp rates fully programmable.

**Safe:** No glass, mercury, UV or IR. No hazardous waste – recyclable.

**Future Proof:** Meets or exceeds Design Lights Consortium Intelligent Controls requirements 2016. Over-the-air firmware upgrades.

**Optional:** Germicidal Light source using violet (non-UV) light for room sterilisation.



**IntelliSUN: Focused on the well-being of people.**

Distributed by:

Net Zero Energy Solutions Ltd

[www.netzero.co.nz](http://www.netzero.co.nz)

enquiries to: [sales@netzero.co.nz](mailto:sales@netzero.co.nz)